



# SUSE Manager

# Why Do I Need SUSE Manager?

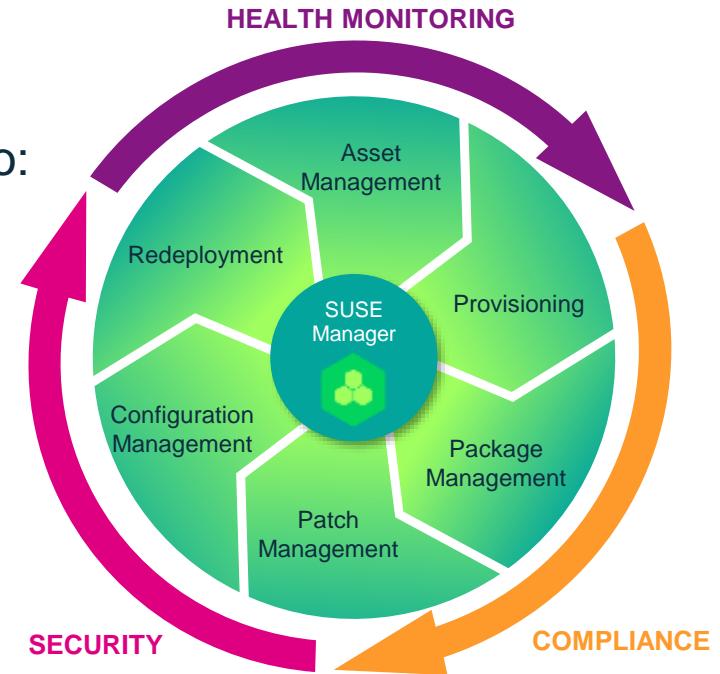


# SUSE Manager

Available  
on the Public  
Cloud

**Best-in-class open source infrastructure management solution** designed to help your enterprise DevOps and IT Operations teams to:

- Optimize operations while reducing **costs**
- Reduce **complexity** and regain control of IT assets
- Ensure **compliance** with internal security policies and external regulations

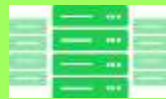


# Delivering Digital Transformation SUSE Manager can help

**EDGE**



**CORE**



**CLOUD**

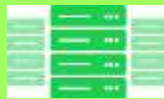


# Delivering Digital Transformation SUSE Manager can help

**EDGE**



**CORE**

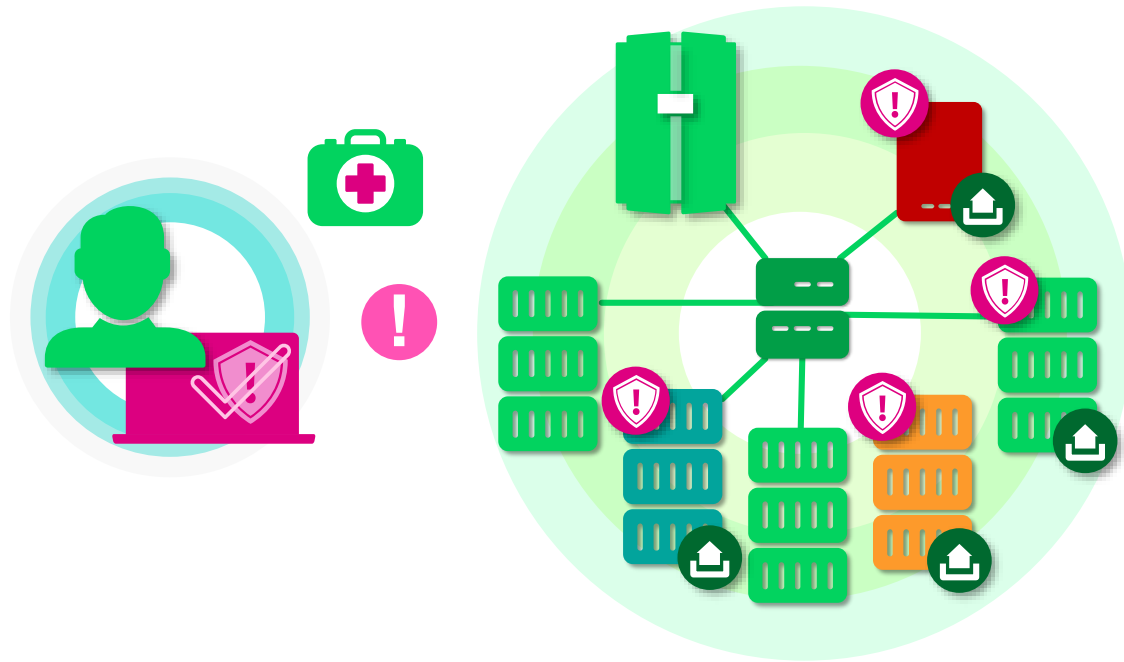


**CLOUD**



# Consistency in your Transformation

Enabling IT administrators to automate their Linux server provisioning, patching and configuration for faster, consistent and maintainable server deployments

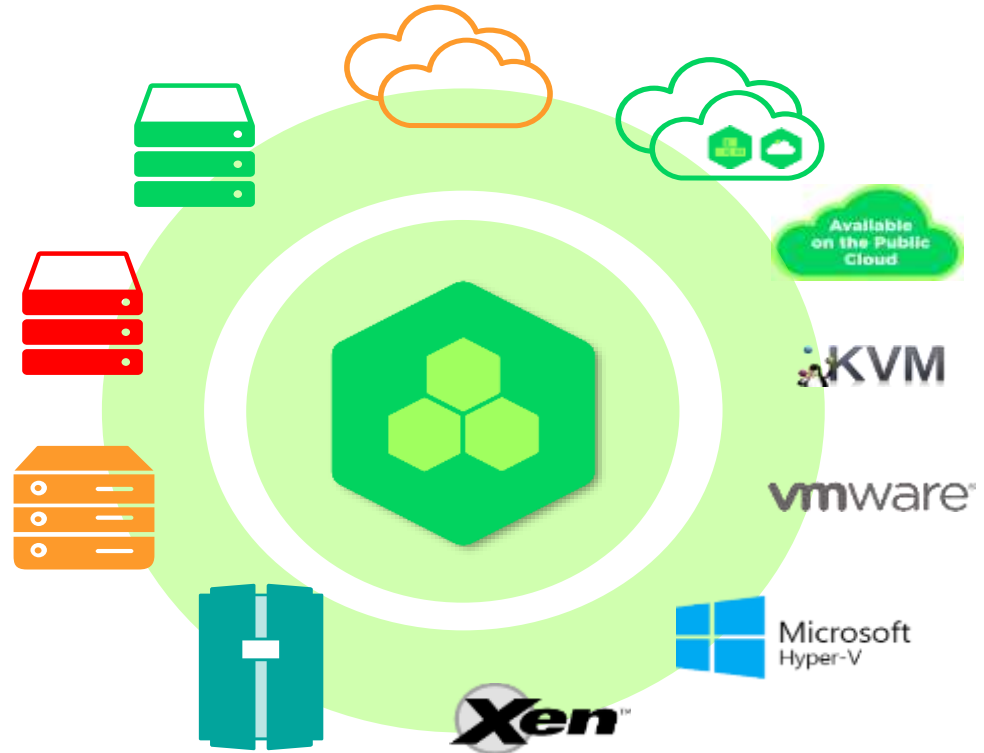


Manage all of your enterprise Linux distributions from a single tool

# Control wherever you need it!

## SUSE Manager:

Powerful content control and system management, wherever deployment needs to be strategically done – across hypervisors, clouds, or architectures



# Realize your ROI Quickly

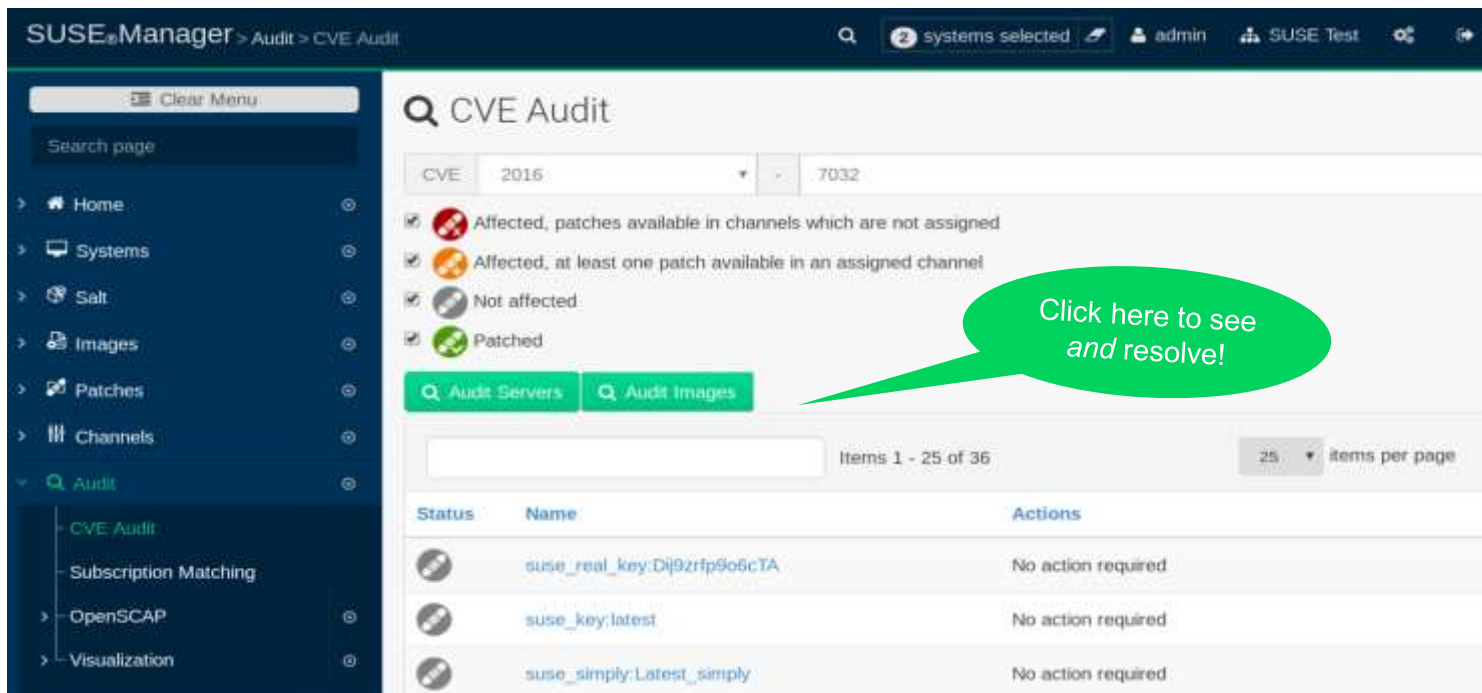
SUSE Manager can be deployed rapidly – usually within a week or two. Your investment begins to pay off right away!

Multiple repositories and landscapes get the control you want – when you want.





# Container & Cloud VM Compliance



SUSE Manager > Audit > CVE Audit

2 systems selected | admin | SUSE Test

### CVE Audit

CVE: 2016 - 7032

- Affected, patches available in channels which are not assigned
- Affected, at least one patch available in an assigned channel
- Not affected
- Patched

[Audit Servers](#) [Audit Images](#)

Items 1 - 25 of 36 | 25 items per page

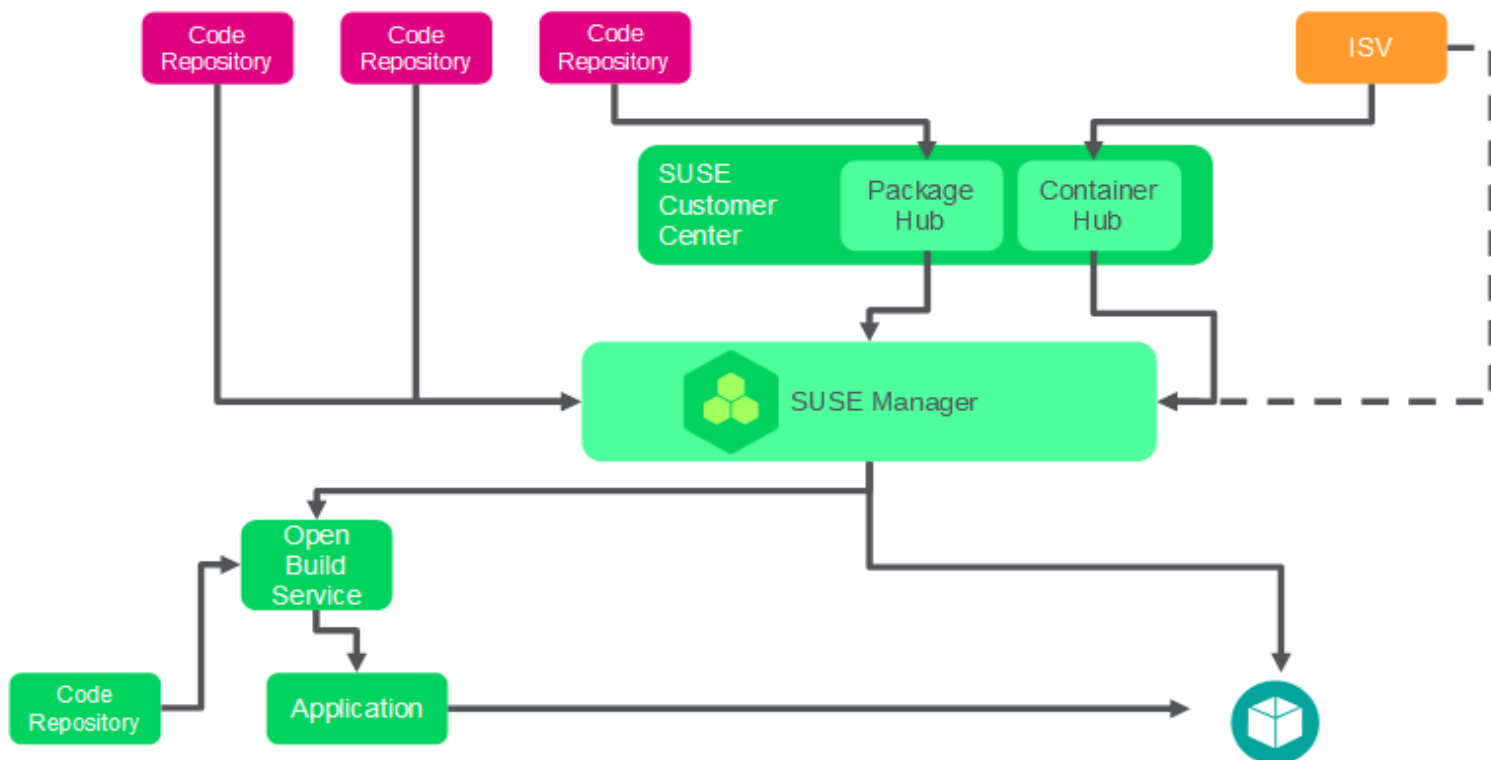
Status	Name	Actions
	suse_real_key:Di9zrfp9o6cTA	No action required
	suse_key:latest	No action required
	suse_simply:Latest_simply	No action required

*Click here to see and resolve!*

- Validate compliance (patch levels etc.) for systems and containers (CVE Audit)
- OpenSCAP audits now also via Salt

**Demo!**

# Image Building with SUSE Manager



# Image Building with SUSE Manager: Workflow

<b>Configuration option</b>	<b>Meaning</b>	<b>Container images</b>	<b>OS Images</b>
<b>Image store (output)</b>	Where all built images will be pushed	Container registry	OS Image store (a directory served via HTTPS)
<b>Config URL</b>	A Git URL pointing to the instructions to build the image	Dockerfile	Kiwi config file
<b>Activation Key</b>	Specifies the software channels to use when building the image	Optional	Mandatory

# SUSE Manager – Supported Client Systems

Operating System	Architecture	Traditional Clients	Salt Clients
SUSE Linux Enterprise 11 SP3 and SP4	x86, x86-64, Itanium, IBM Power Systems, IBM z Systems	Supported	Supported
SUSE Linux Enterprise 12, SP1, SP2, SP3,SP4	x86-64, IBM Power Systems (ppc64le), IBM z Systems, ARM64 (aarch64)	Supported	Supported
SUSE Linux Enterprise 15, SP1	x86-64, IBM Power Systems (ppc64le), IBM z Systems, ARM64 (aarch64)	Supported	Supported
Red Hat Enterprise Linux 6	x86, x86-64	Supported	Supported
Red Hat Enterprise Linux 7	x86-64	Supported	Supported
Novell Open Enterprise Server 11, SP1, SP2 and SP3	x86, x86-64	Supported	Supported
Novell Open Enterprise Server 2015 SP1, 2018	x86, x86-64	Supported	Supported

# SUSE Manager Clients – Coming soon

<b>Operating System</b>	<b>Architecture</b>	<b>Traditional Clients</b>	<b>Salt Clients</b>
openSUSE Leap 42.3, 15, 15.1	x86-64, ARM64 (aarch64)	Supported	Supported
Ubuntu LTS – 16.04, 18.04	x86-64	Not supported	Supported
CentOS Linux 6	x86, x86-64	Functional	Supported
CentOS Linux 7	x86-64	Functional	Supported
Oracle Enterprise Linux	x86, x86-64	Functional	Functional

# SUSE Manager 3.2 – Available today:

**Be ready for the future** with the latest package versions (Salt 2018.3.0 ready for Python 3, Spacewalk 2.8, PostgreSQL 9.6) and SLE 15 enablement

## **Easily manage large complex deployments**

- **Formulas with Forms** improved/extended to model even complex parameters (e.g. for user management) and fully API-enabled. *Allows clean separation of concerns between experts preparing secure organization defaults and day-to-day admins*
- **Salt states can now be created and edited completely from the UI**
- **Salt supports action chains** (*update Salt through Salt, reboots, ...*)

## **Secure your images and running instances and keep them compliant**

- with integrated KIWI image building for Virtual Machines and physical installation images

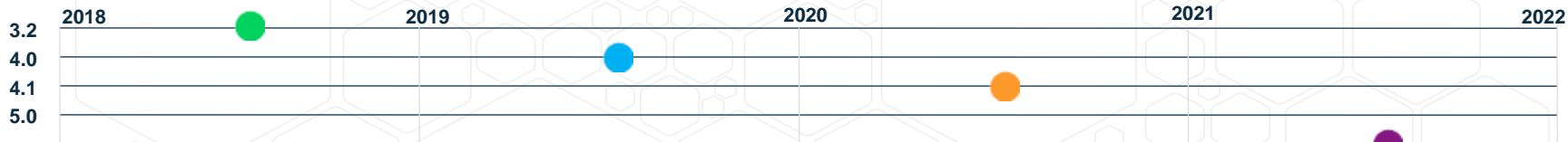
## **SUSE Manager for Retail**

**Demo!**



# Roadmap

# SUSE Manager



## 3.2

### Configuration Management

- Full UI for Salt-based config management
- Significant improvements to Formulas with Forms

### Product Integration & Supported Platforms

- SUSE Linux Enterprise 15 (client) support
- Ubuntu support\*\*
- SUSE Manager for retail (PXE with image support, KIWI-based image building)

### Monitoring

- Prometheus/Grafana "self-monitoring" documentation\*\*

### Containers & Cloud

- VM building with Salt & KIWI

*Requires SUSE Linux Enterprise Server 12 SP3/SP4*

## 4.0

### Configuration Management

- Content (patch and configuration) staging UI & improved API
- Templates for HA cluster and SAP workload setup\*\*

### Product Integration & Supported Platforms

- Better integration with SUSE CaaS Platform, SUSE Enterprise Storage, SUSE OpenStack Cloud
- openSUSE, Debian, CentOS support\*\*
- Single sign-on support

### SDI Management

- Maintenance windows\*\*
- Improved virtualization management\*\*

### Monitoring

- Complete Prometheus-based monitoring stack\*\*

### Containers & Cloud

- Proxy server shipped as container\*\*

*Based on SLES 15 SP1*

## 4.1

### Configuration Management

- Config drift management
- Support for cluster orchestration (HA, SUSE CaaS Platform, SUSE Enterprise Storage)
- **C/CD Integration** with existing **Terraform** and **GitLab** instances

### Product Integration & Supported Platforms

- Integration with the complete SUSE SDI stack (SUSE CaaS Platform, SUSE Cloud Application Platform, SUSE Enterprise Storage, SUSE OpenStack Cloud)
- Basic management of Windows clients (TBD)

### SDI Management

- Manage and monitor the complete SDI stack

### Subscription Management

- Public cloud data gatherer

### Monitoring

- Grafana dashboard plugins for SUSE CaaS Platform, SUSE Enterprise Storage
- Log management (TBD)

*Based on SLES 15 SP2*

## 5.0

### Configuration Management

- Fully integrate **Terraform** and **GitLab/Gitty**

### Product Integration & Supported Platforms

- Edge IT/IoT device management
- Salt-based next generation bare metal installation framework

### Security & Compliance

- Salt-based security audit & remediation

### SDI Management

- Multi-cloud capabilities
- Powerful virtualization management for large distributed environments
- Optimized for Edge IT management

### Monitoring & Trouble Shooting

- Provide actionable insights from data correlation
- Automated remote support data collection

### Containers & Cloud

- All components shipping as containers (TBD)

*Based on SLES 15 SP3*

\*\* Item delivered post GA

Information is forward looking and subject to change at any time.

# SUSE Manager – More Information

Additional resources can be found on our webpage at:

<https://www.suse.com/products/suse-manager>

SUSE Manager 60 day trial download can be found at:

<https://www.suse.com/products/suse-manager/download/>

Matrix of SUSE Manager Clients:

[https://wiki.microfocus.com/index.php/SUSE\\_Manager/Client\\_Matrix](https://wiki.microfocus.com/index.php/SUSE_Manager/Client_Matrix)

